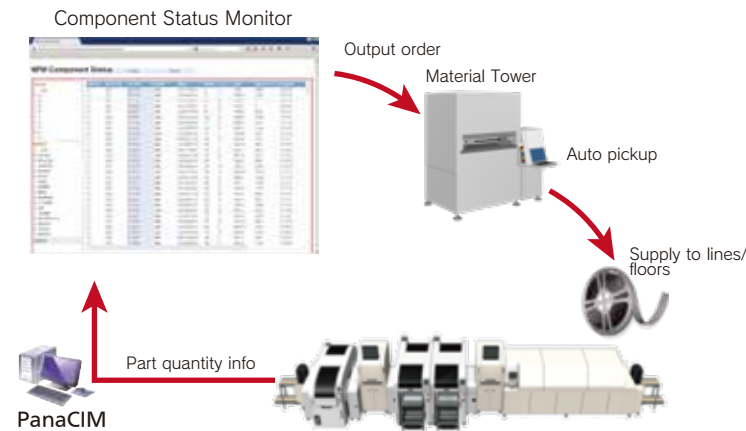


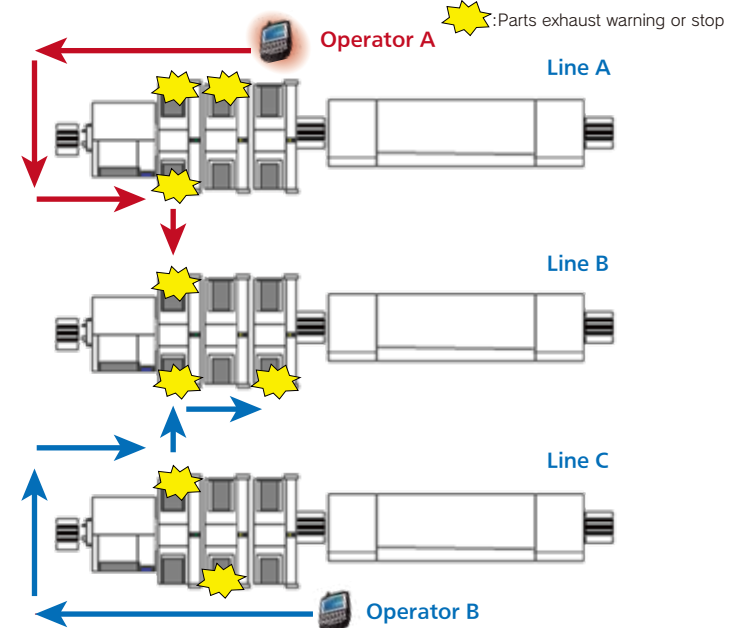
Application example

① Predictive management of parts exhaust and automatic parts Output (Material Verification + Material Control)



No waiting for parts to be supplied due to "No Parts"!
Realize Reduce labor resources and Productivity improvement !

② Component Supply Navigator (Production Monitoring and Dispatch / Component Supply Navigator option)

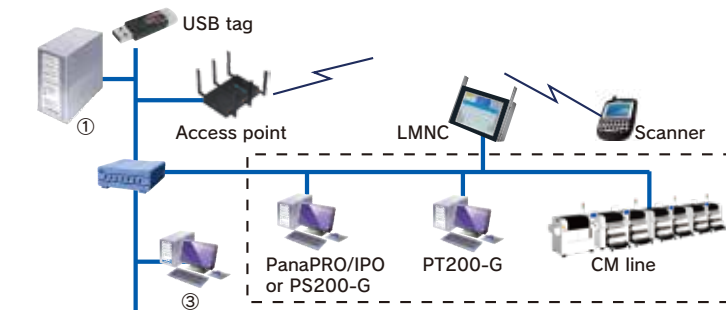


- (1) Reduction of the duration of machine downtime caused by parts exhaust by 73.1%*
- (2) As a result of (1), the operating ratio increased by 10%*

*May vary depending on your operating environment.

System configuration example

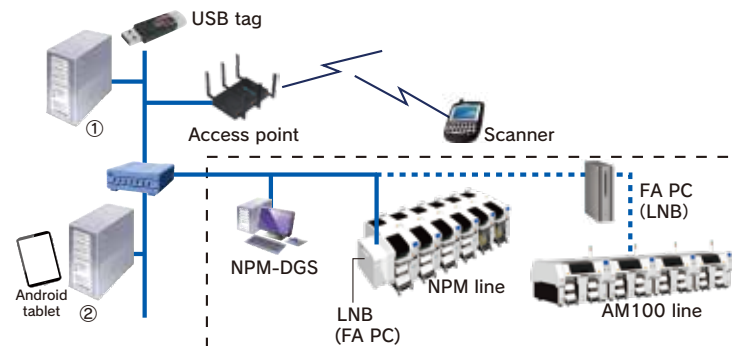
[For CM series line]



- ① PanaCIM-EE server (app server + controller server)
- ② PanaCIM maintenance server
- ③ PT interface (communication with PT200)

*System configuration differs depending on applied machine.
For details, contact your local distributor or sales representative.

[For NPM series or AM100 line]



Your own devices



Safety Cautions

- Please read the User's Manual carefully to familiarize yourself with safe and effective usage procedures.
- To ensure safety when using this equipment, all work should be performed according to that as stated in the supplied Operating Instructions. Read your operating instruction manual thoroughly.

Panasonic Group products are built with the environment in mind.

Please check the homepage for the details.
panasonic.com/global/corporate/sustainability

Inquiries...

Panasonic Corporation
Process Automation Business Division

Rivage Shinagawa 14F, 4-1-8 Konan, Minato-ku, Tokyo 108-0075, Japan
TEL +81-3-5796-2562
FAX +81-3-5460-1016

All data as of January 1, 2020

Ver. January 1, 2020

© Panasonic Corporation 2020

Panasonic

Panasonic BUSINESS

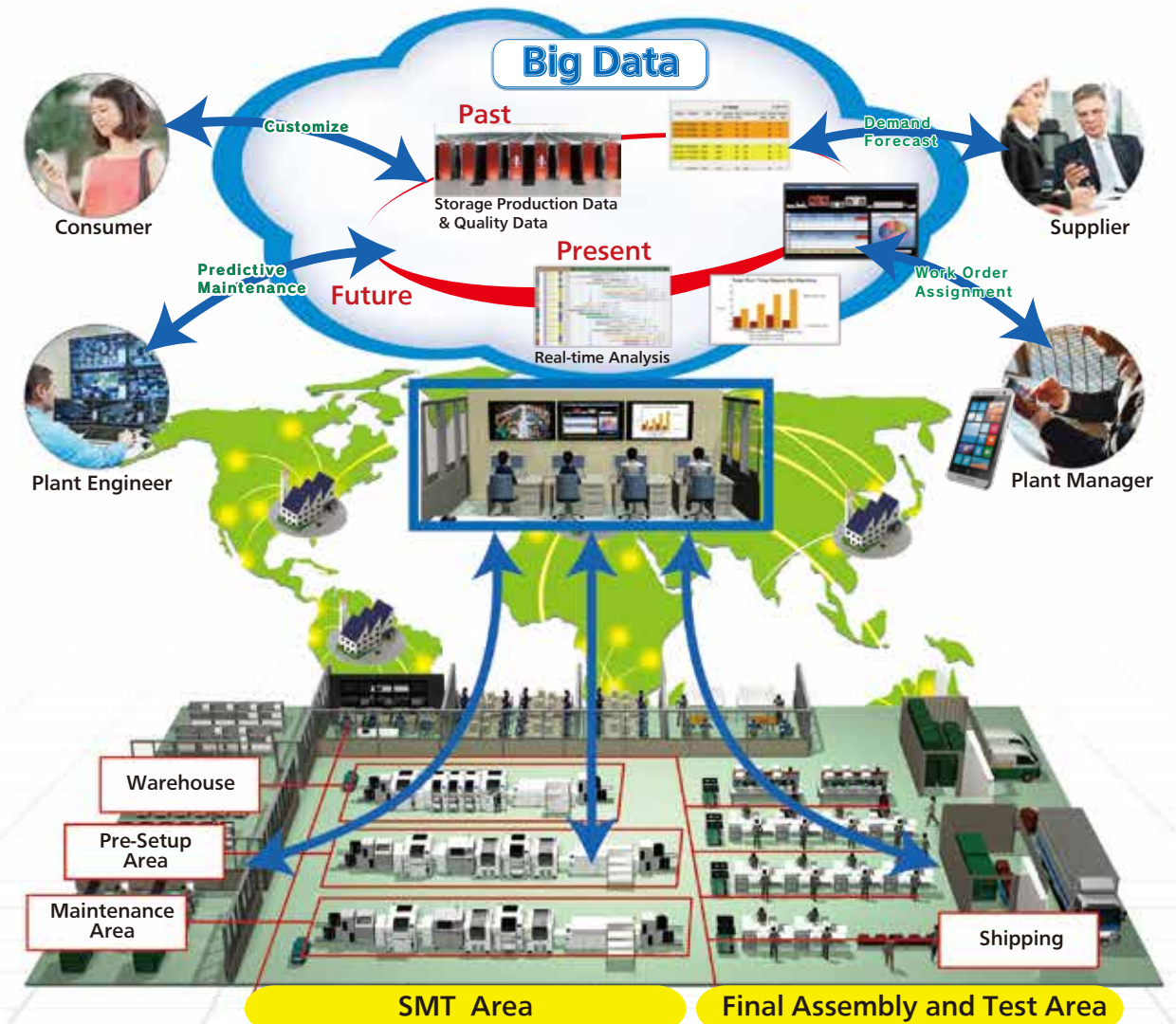
2020
**Electronics Assembly System
catalog**
Mounting MES Software



PanaCIM-EE

Model No. NM-EJS3B

Panasonic's smart factory solution PanaCIM-EE
realizes market-inductive production



PanaCIM-EE connects SMT areas with each other in synch with management system, offering a proper QCD balance for production and thus contributing to a further increase in profitability.



Integrated management of an entire SMT floor realizes enhanced quality, reduced costs and increased floor productivity

Composed of 8 functions, PanaCIM-EE allows you to individually install necessary functions.

Material Verification
Prevents wrong parts setup

- Machine interlock for wrong parts setup
- Pre-setup
- Splicing verification without interruption

Material Control
Manages floor material inventory, reduces inventory

- Location/remaining quantity management
- MSD management
- Expiration management

Maintenance
Manages floor assets and performs maintenance

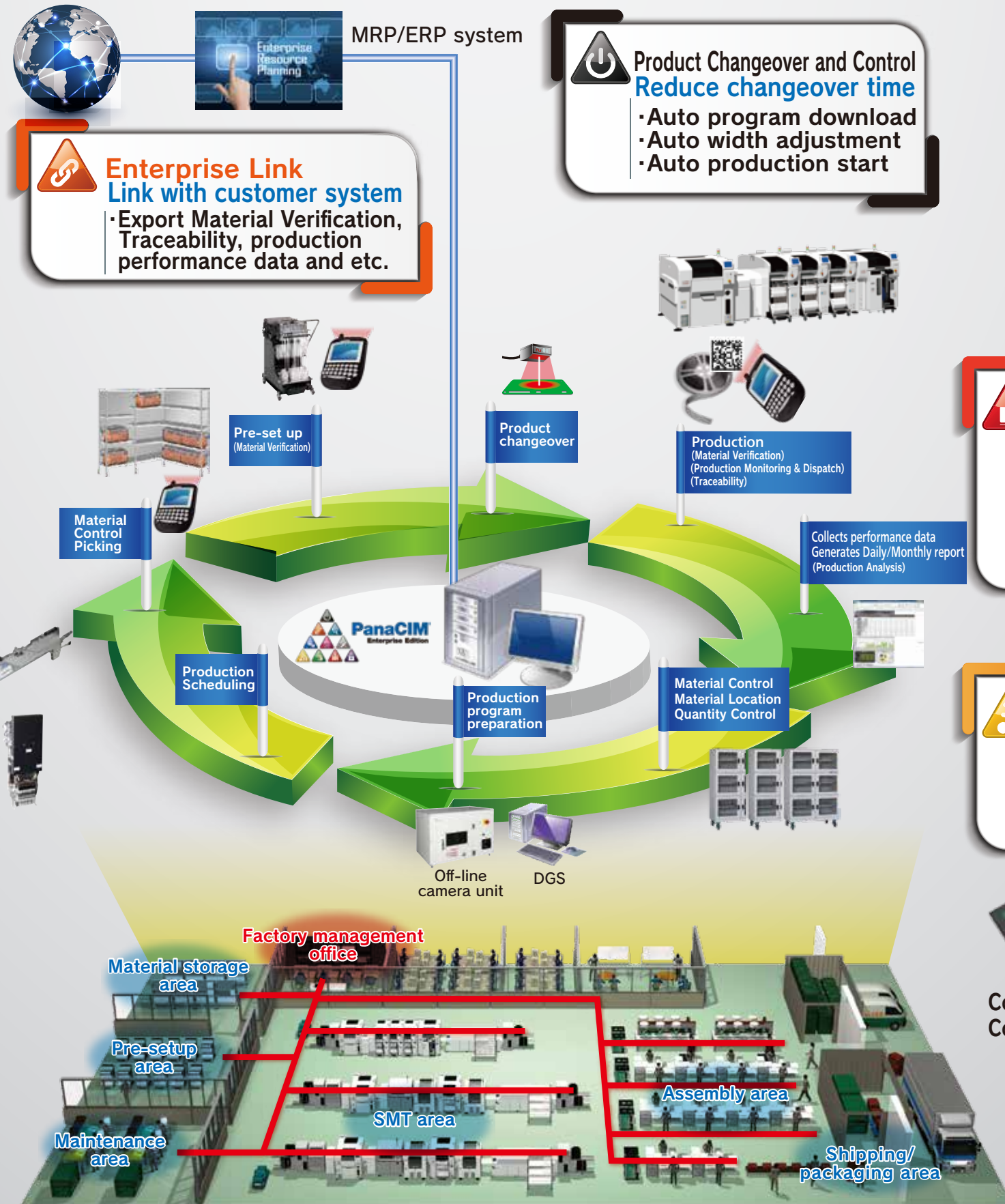
- Asset management, efficient maintenance instructions
- Collection of maintenance work records and historical management
- Prevention of misuse of defective assets

Offering a function to implement a PDCA cycle for maintenance

Maintenance plan support	Plan <ul style="list-style-type: none">Decides on the maintenance order for assets and the timing of maintenance	Action <ul style="list-style-type: none">Manages records of maintenanceKeeps track of asset inventories
	Do <ul style="list-style-type: none">Prevents confusion of target assetsPrevents neglect of maintenance	Check <ul style="list-style-type: none">Prevents yet-to-be-maintained assets from being misused



*Screens are currently under development. So they may differ from actual/real ones.



Product Changeover and Control
Reduce changeover time

- Auto program download
- Auto width adjustment
- Auto production start

Traceability
Collects in-process/market defects and supports defect analysis

- Trace data generation
- Trace data searching
- Trace report creation

Production Analysis
Analyzes factors contributing to a decrease in operating ratio, aids in implementation of remedial measures

- Store machine performance data
- Machine performance check
- Chart/Report output

Production Monitoring & Dispatch
Provides action instructions to minimize downtime

- Real-time display of performance status
- Notification to operators
- Component Supply patrol instruction

Component Supply Navigator (option):
Component Supply route instruction image